

CAVIUS SMOKE ALARM



Commercial reference: 2001-030
Developed by CAVIUS

PLEASE READ THE USER GUIDE CAREFULLY BEFORE USE AND RETAIN FOR FUTURE USE!

CAVIUS smoke alarm is designed for private homes, camping trailers and caravan installations. It is not recommended for boats.

Technical information:

Type of alarm: CAVIUS smoke alarm is a photo electric smoke alarm.

Alarm signal: Fire alarm condition is indicated by a series of repeated tones. The minimum sound level is 85 dB at 3 meters.

Battery: Powered by a replaceable 3v CR2 DESAY or Duracell Lithium battery (included).

IMPORTANT: Proper operation of the detector is ensured by Desay/ Duracell battery use.

Low battery indicator: A short "beep" will sound and LED flash every 48 seconds when the battery is near the end of life. In this stage it will continue for a minimum 30 days.

It is recommended to change the smoke alarm after 10 years, or if the alarm has suffered any damage. Alarm can not be inserted in the base if the battery is not installed.



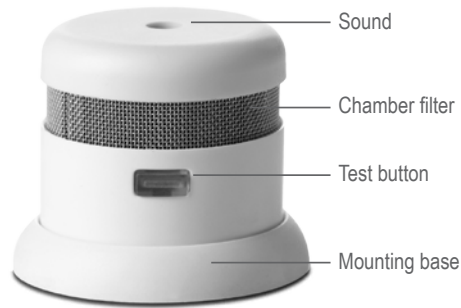
Placement: The smoke alarm is designed for placement on a ceiling. The smoke alarm should be a minimum of 50 cm from the wall, with a minimum of one smoke alarm per floor and a maximum distance between smoke alarms of 10 meters.

Alarm signal: The alarm has a visual and acoustic alert tone. In the passive state, the LED will flash every 48 seconds to indicate normal function. In an alarming state the LED will flash and the alarm will emit a sweeping sound pattern design to alert occupants.

Hush function: In case of unintentional alarm condition or false alarms, press the side button. This will hush the alarm for 10 minutes, after which time it will automatically resume its normal alarm function.

Maintenance: The smoke alarm should be vacuum cleaned once per quarter, and it can be wiped with a damp cloth. (Do not open the alarm).

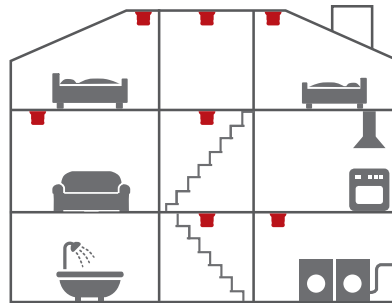
Test the alarm at least once per quarter by pushing the test button. The alarm will self test and give a loud alarm tone.



The best places to mount the alarm:

- Place an alarm between possible fire sources and bedrooms as minimum.
- Alarms on each floor and in hallways and stairways.
- Alarms in each room such as bed rooms and living rooms.

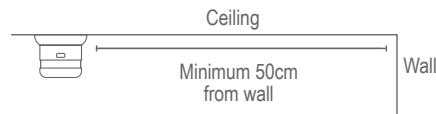
Additional alarms increase the security.



■ Minimum

Installation of alarm:

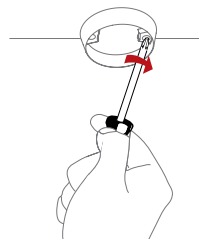
1. Detach the alarm from the mounting base by twisting counter clockwise. Use the mounting base ring to mark the screw holes on the ceiling. Use the enclosed screws and plugs to install the mounting base. Once the mounting base is installed on ceiling, attach the alarm by twisting clockwise.



Mark up screw holes with a pen



Use the enclosed screws and plugs for installation



2. Pull out the battery isolation strip as shown.



3. After mounting, test the alarm by pushing the test button on the side and get a loud alarm tone.

Please note: The label in the product must not be removed as it contains important information regarding the product.

The alarm may NOT be placed:

- In dusty rooms.
- At the top of high pointed ceilings or in ceiling corners or within 50 cm of a wall.
- In rooms where the temperature goes out side +4° to 38°C or above 90% relative humidity not condensing.
- In kitchen, garage and fireplaces where damp, gases and smoke could occur. Place the alarm where it is reachable in order to test the battery and for main tenance.

Fault finding: If the smoke alarm activates without visible cause, the possible cause could be:

- Dust particles in the smoke chamber which can be removed by vacuuming the mesh.
- High humidity condensing which can be resolved by drying the smoke alarm.

If the smoke alarm does not work when the test button is pushed, the probable cause is a faulty battery. Check if the battery is worn out and replace it. **Always test the alarm after replacement of battery.**

Other information: Do not paint the alarm.

Note the local country regulations regarding installation of mains powered alarms in new buildings.

Disposal: For battery and product, please dispose properly at the end of life. This is electronic waste which should be recycled.

Please note local regulations about information to your insurance company regarding installed smoke alarms.



0333

EN 14604:2005 + AC :2008
DoP no.: 2001-030

Download DoP document: www.cavius.com



The CE mark affixed to this product confirms its compliance with the European Directives which apply to the product and, in particular, its compliance with the harmonized specifications of standard EN 14604 relating to Construction Products Regulation 305/2011.

All Rights reserved: CAVIUS Aps assumes no responsibility for any errors, which may appear in this manual. Furthermore, CAVIUS Aps reserves the right to alter the hardware, software, and/or specifications detailed herein at any time without notice, and CAVIUS Aps does not make any commitment to update the information contained herein. All the trademarks listed herein are owned by their respective owners. Copyright © CAVIUS Aps.

Developed by CAVIUS Aps Julsøvej 16, DK-8600
Manufactured in P.R.C.